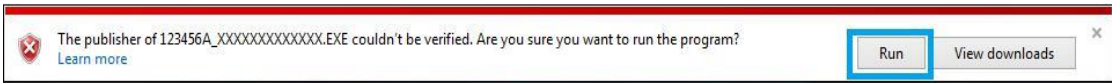


TIG Download, and Installation Instructions

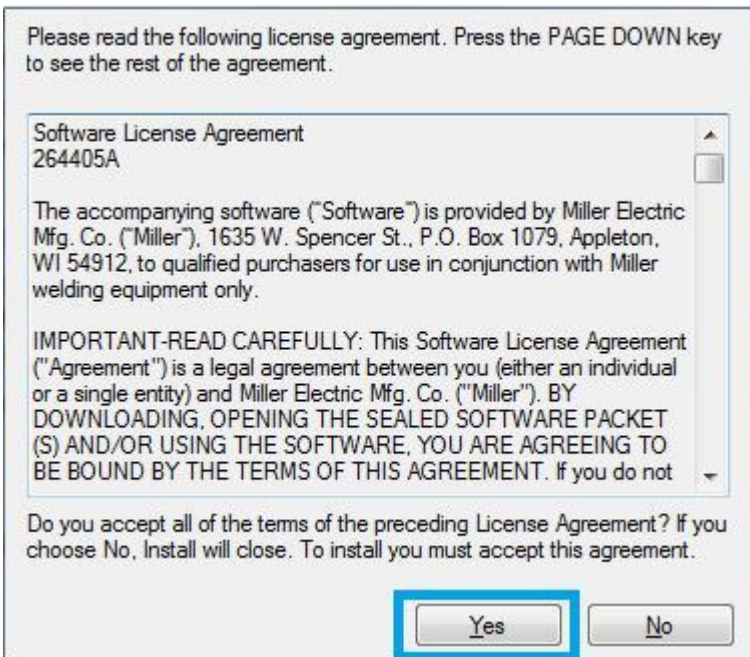
1. Insert your memory card into the appropriate memory card slot of your computer
2. Verify that the memory card is blank before continuing.
3. Click on the DOWNLOAD button to begin the downloading of the file
4. Most Web browsers will ask you how you would like to handle the file. Choose to Run the file. Depending on your browser, the wording may vary (e.g. "Run" or "Open" are typical choices).



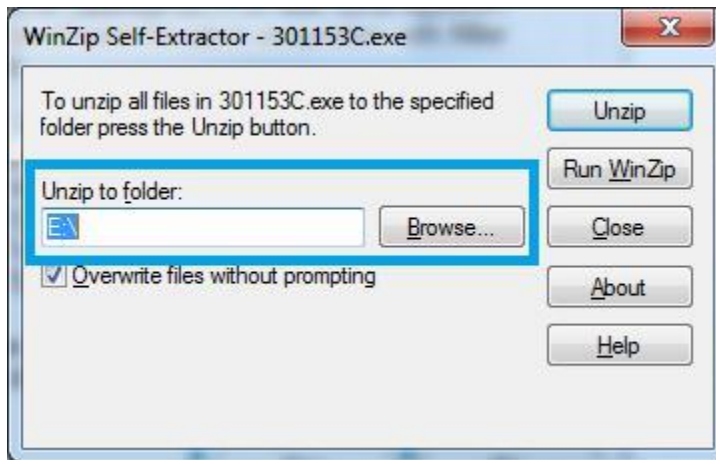
5. Your Web browser may ask you to verify the publisher of the file. Choose to Run the file (wording may Vary depending on your browser).



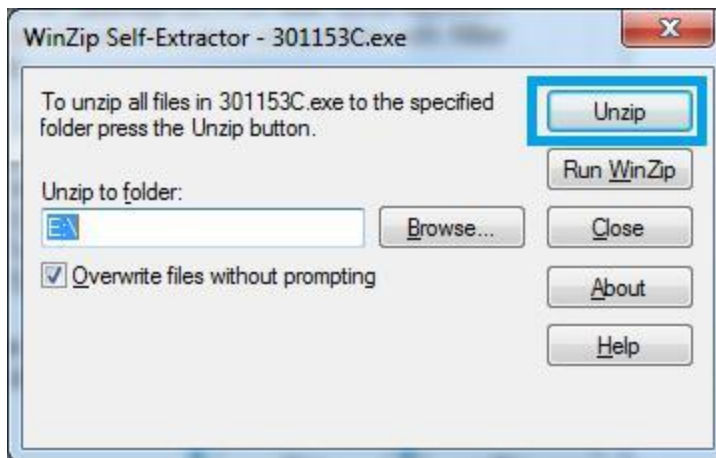
6. Read the software license agreement and click the "Yes" button to continue with the download.



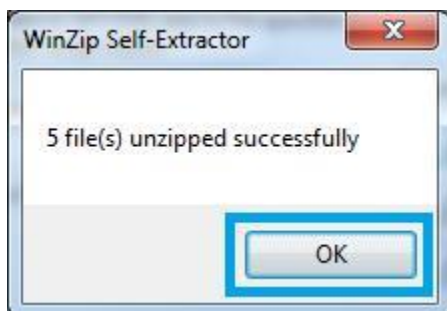
7. If necessary, change the drive letter to the correct letter for your memory card in the space provided or by using the Browse button to select the memory card drive.



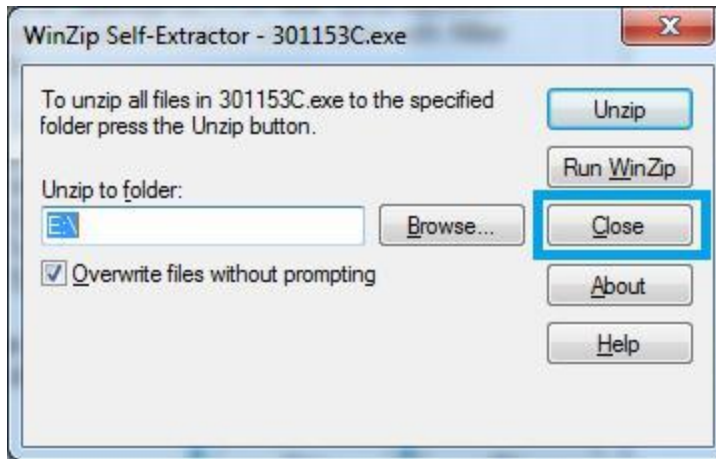
8. Click the Unzip button to extract the files to the memory card.



9. Click OK when the files have been unzipped.



10. Click Close to exit the WinZip Self-Extractor.



11. Open the memory card on the computer and check for PDF files. The PDF files should be printed and reviewed. Supplementary data (sXXXXXX.pdf) are for machine software update and should be stapled to the appropriate owner's manual. Owner's manuals (oXXXXXX.pdf) are for software expansions.

12. Remove the memory card from the slot on your computer.

13. Software Update:

Insert memory card containing new software update into port while machine is on, (but not while welding). Inserting memory card while welding will interrupt the welding process. LED indicator blinks green when machine is reading from or writing to the card, and the meter displays may go blank. The update time may vary up to three minutes. Do **not** remove card while LED is blinking green. After successfully reading from or writing to the card, the LED switches from blinking to continuous green, and the meter illuminates. The machine is now ready for use.

Troubleshooting Software Update:

1. **Indicator LED is blinking red:** Error updating software or software is not compatible. Try removing and inserting card.
2. **Indicator LED is continuous red:** Cannot read card. Card might be bad.

14. Software Expansion:

Insert memory card containing new software expansion into port with or without power applied to machine. LED indicator blinks green when machine is reading from or writing to the card. After successfully reading from or writing to the card, the LED switches from blinking to continuous green. Card must remain in port for software expansion to remain active.

Troubleshooting Software Expansion:

1. **Indicator LED is continuous red:** Cannot read card. Card might be bad.